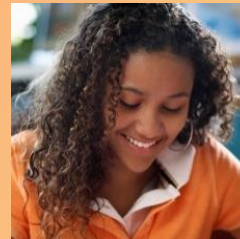


Everett Public Schools

A story of growth, change,
continuous improvement

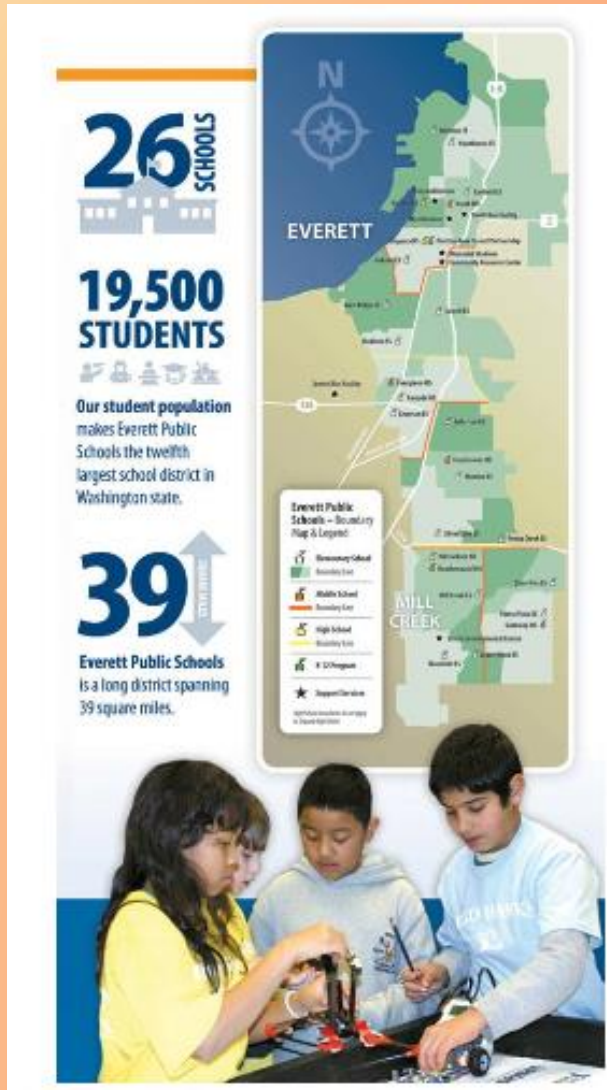
And what's on the horizon

We are Everett
Public Schools.
Thanks for helping
us prepare for our
futures.



Who we are

From Marysville to Bothell

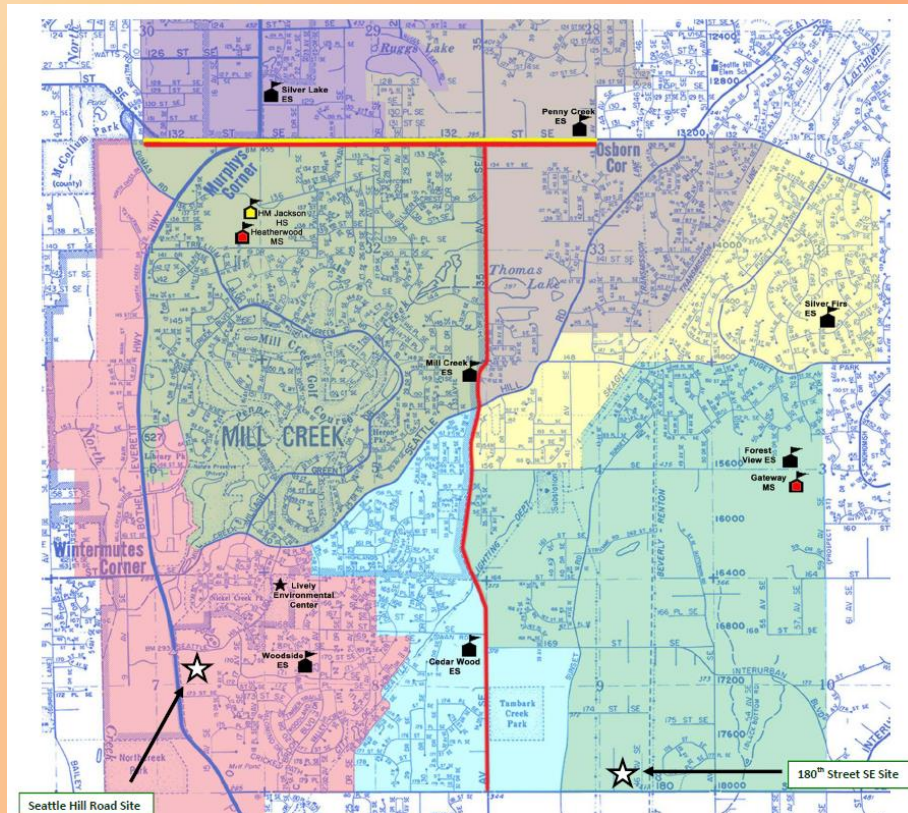


- 3 regions, each connected with a comprehensive high school
- 2 cities, Everett & Mill Creek
- Multiple neighborhoods and enclaves



Who we are

Where most *Mill Creek* students attend school



Jackson HS	863
Mill Creek	635
Heatherwood	526
Penny Creek	215
Cedar Wood	166
Gateway	134
Silver Lake	129
Woodside	95
Silver Firs	53
Forest View	19

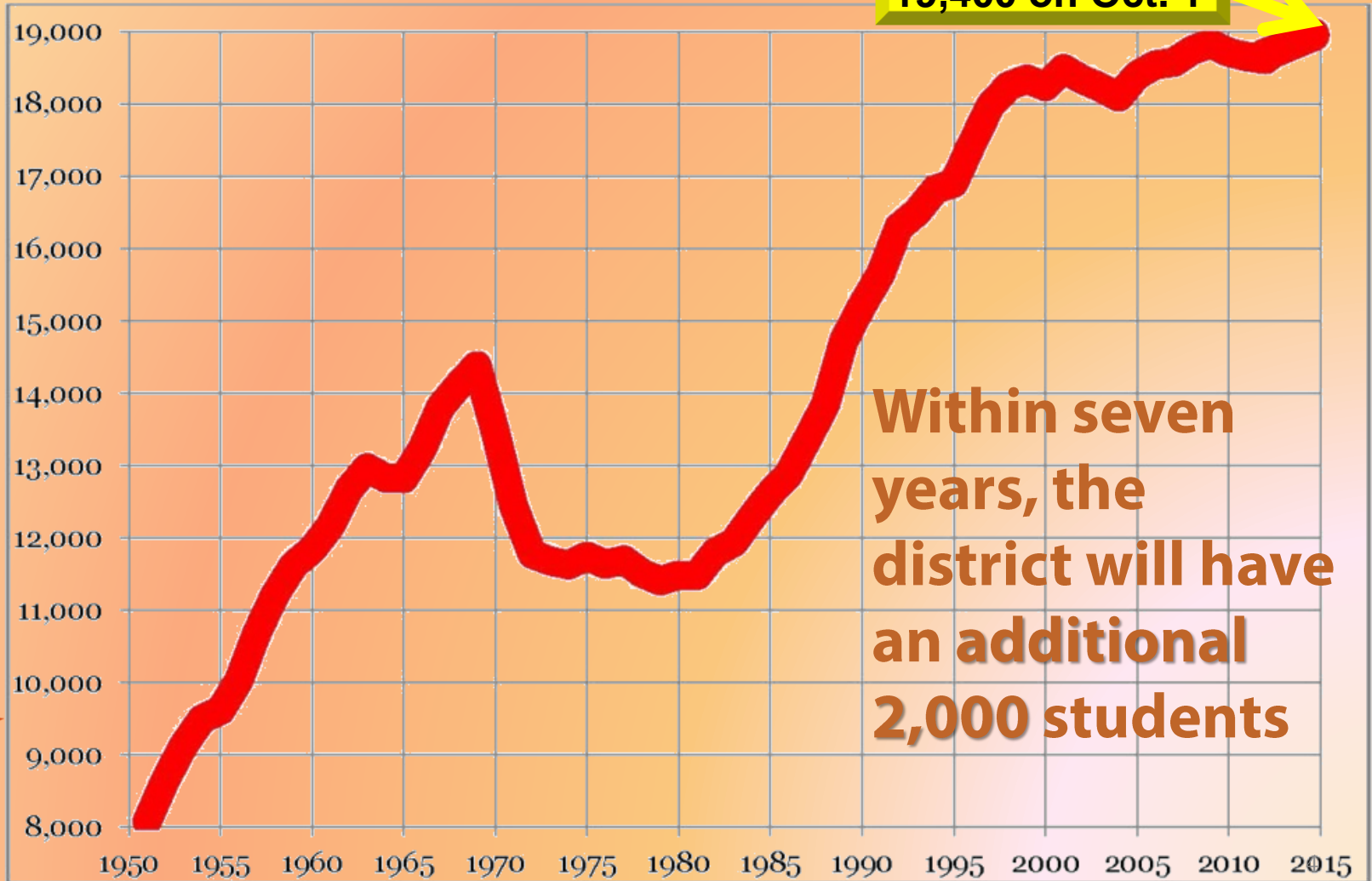
2,883 students with *Mill Creek* addresses attend **21** different schools in Everett Public Schools

Growing

Snohomish County is the fastest growing area in the state



19,400 on Oct. 1

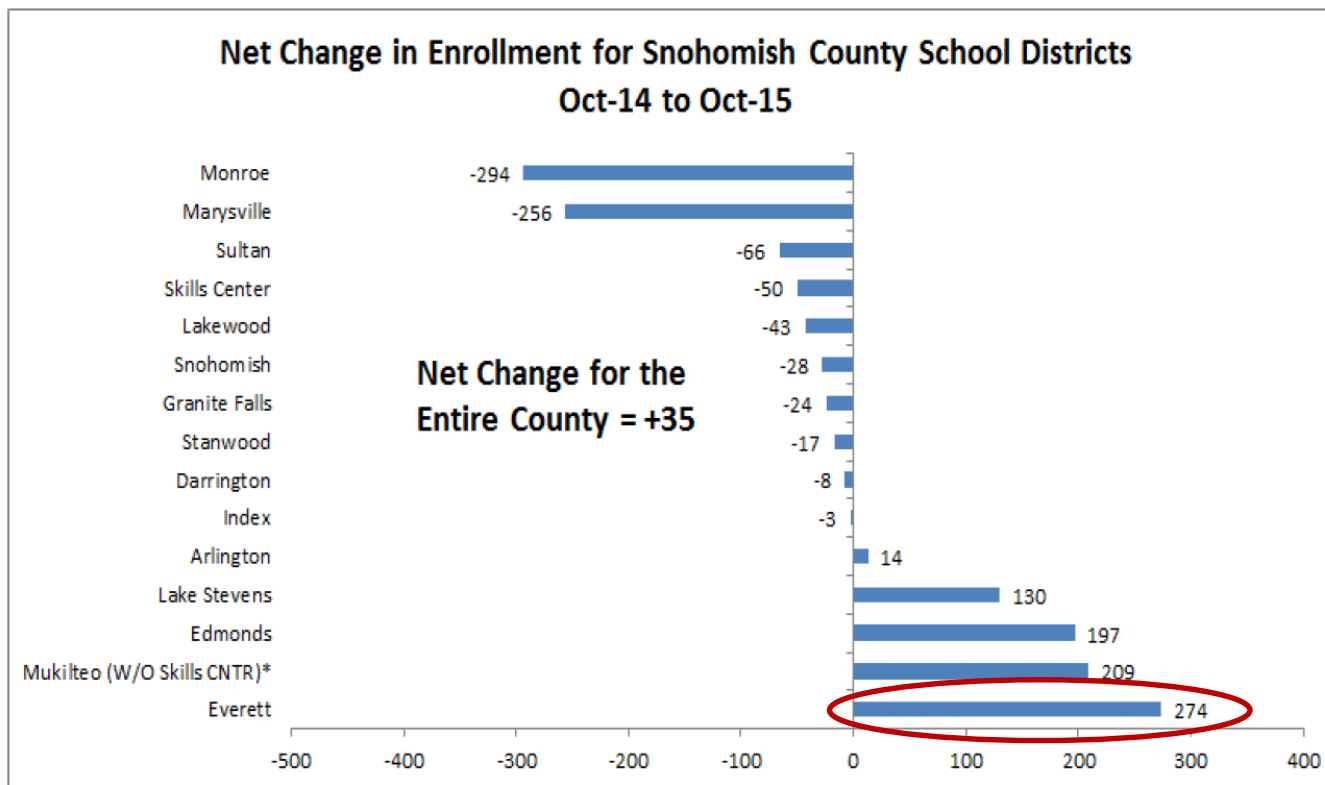


Growing

Snohomish County is the fastest growing area in the state



EPS Enrollment Growth Comparison

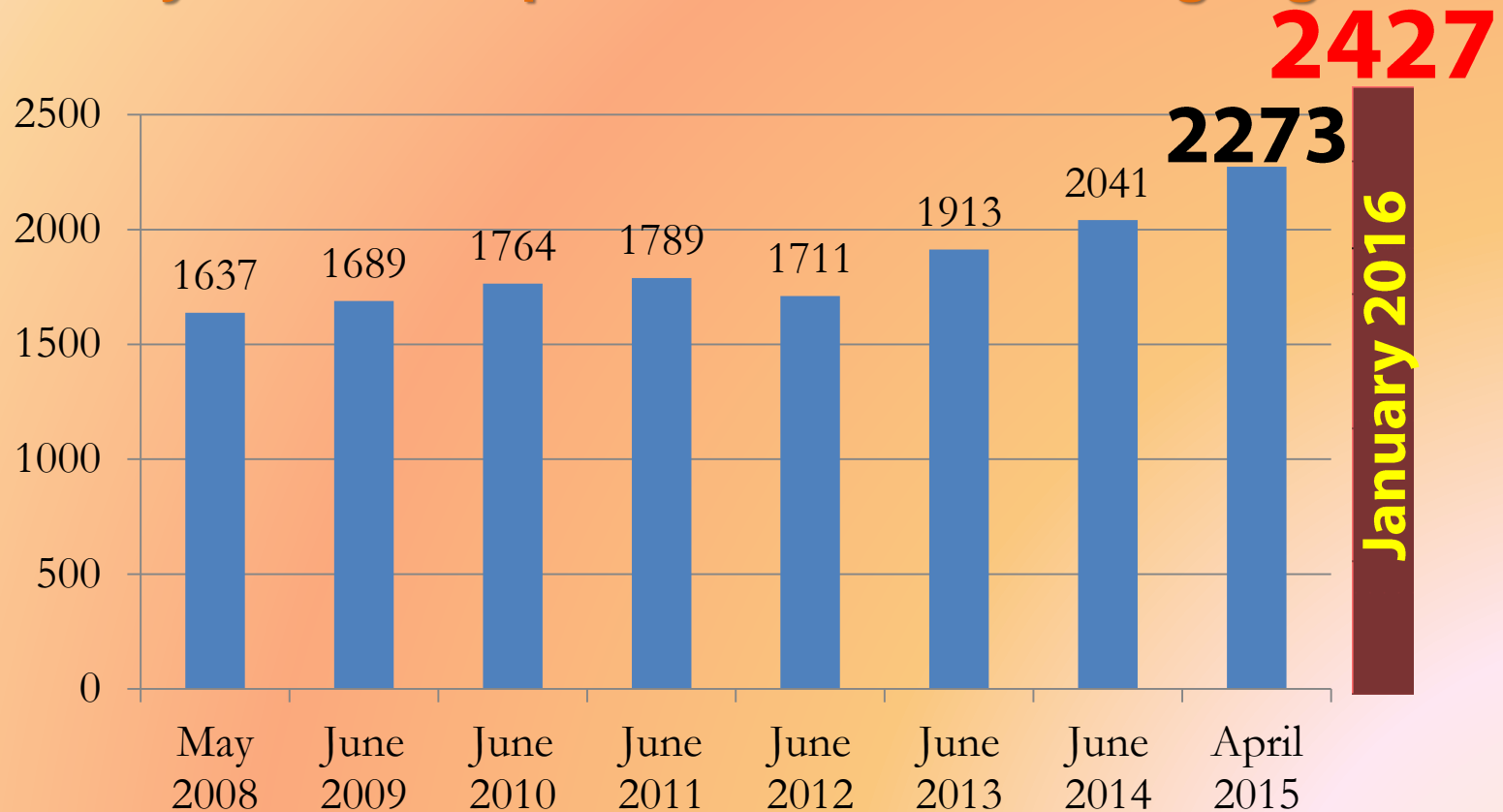


February 9, 2016



Growing & changing

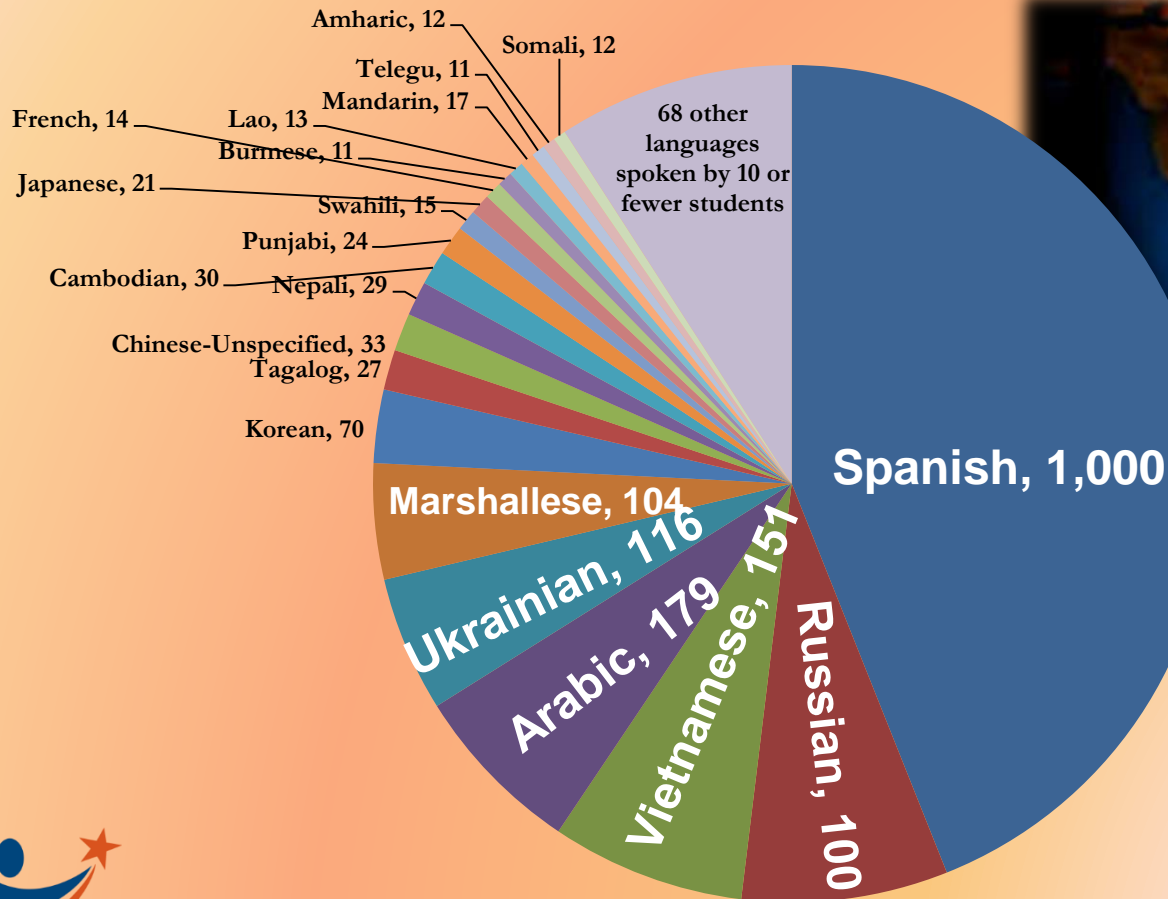
More students speak languages other than English
Today students speak more than 80 languages



Growing & changing

On Oct. 1, 2015

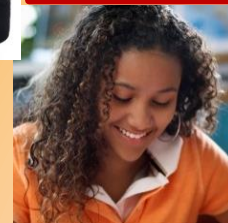
Students spoke 89 different languages



Growing & changing

District poverty rate is 40.4%

Four out of 10
of our students
live in poverty



Growing & changing

Kids In Transition

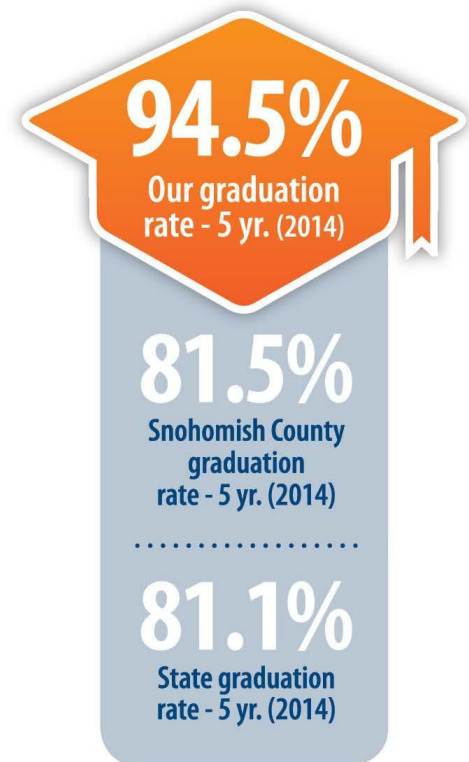
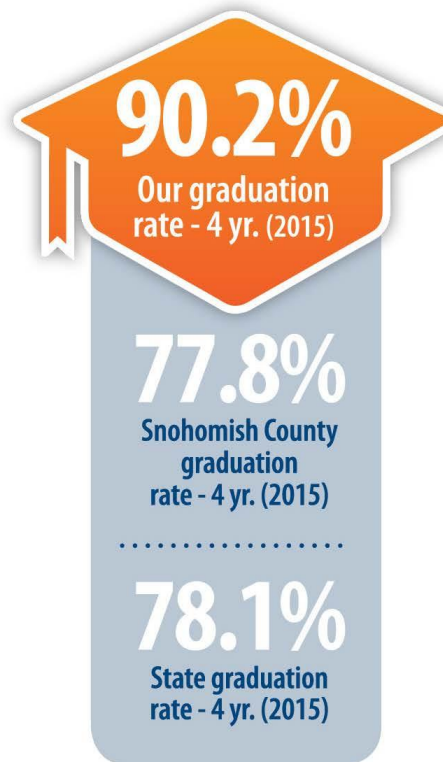
Numbers growing each month

School year	Homeless students
2007-08	458
2008-09	510
2009-10	630
2010-11	835
2011-12	824
2012-13	942
2013-14	866
2014-15	984
2015-16	To date: 962



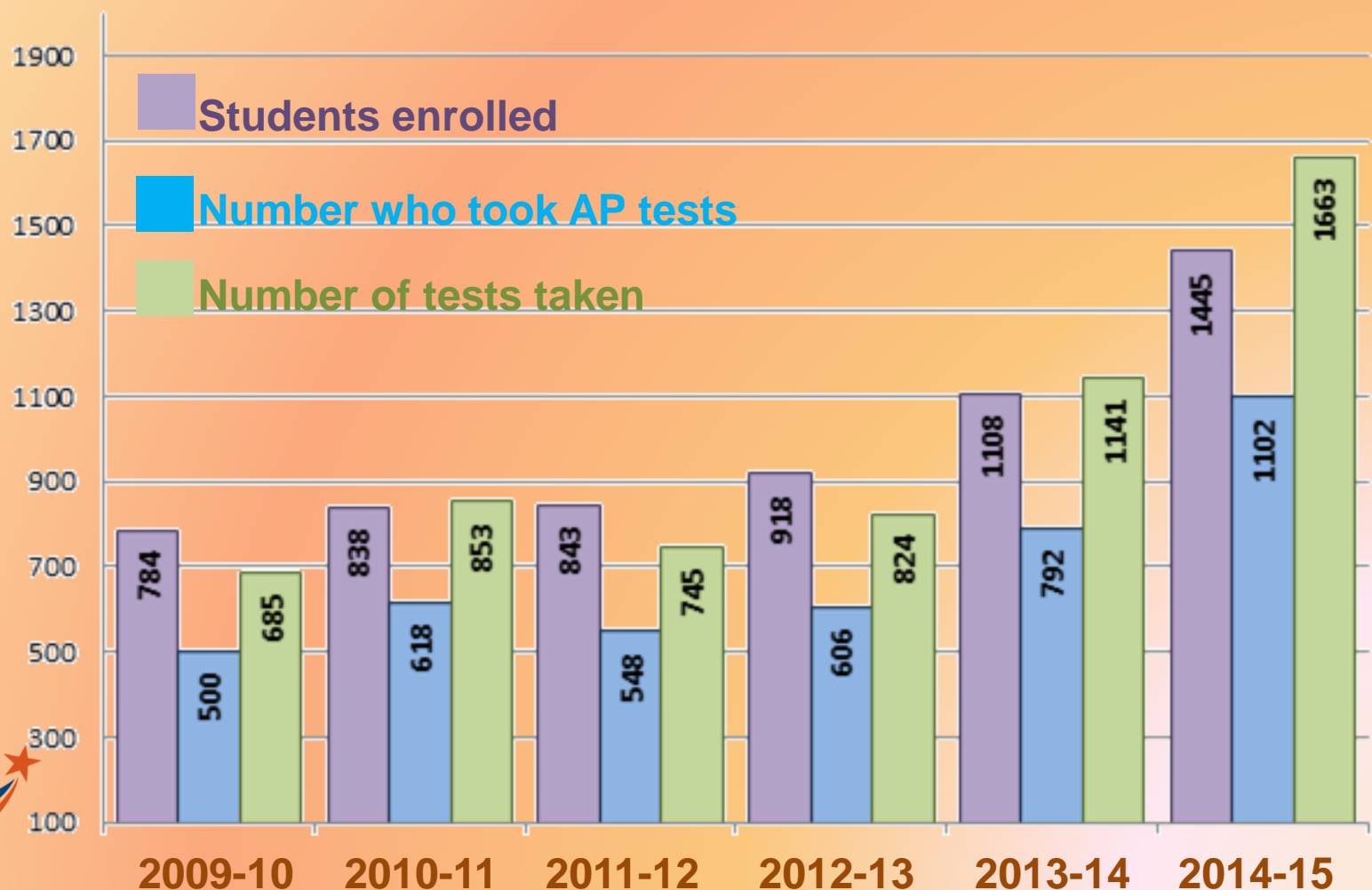
Continuous improvement

Everett graduation rates compared to state & county



Continuous improvement

More students taking challenging classes
Advanced Placement growth over 5 years



Continuous improvement

More students taking challenging classes

College in the High School enrollment trend

2012

Students

Classes

2,048

6,128

2015

Students

Classes

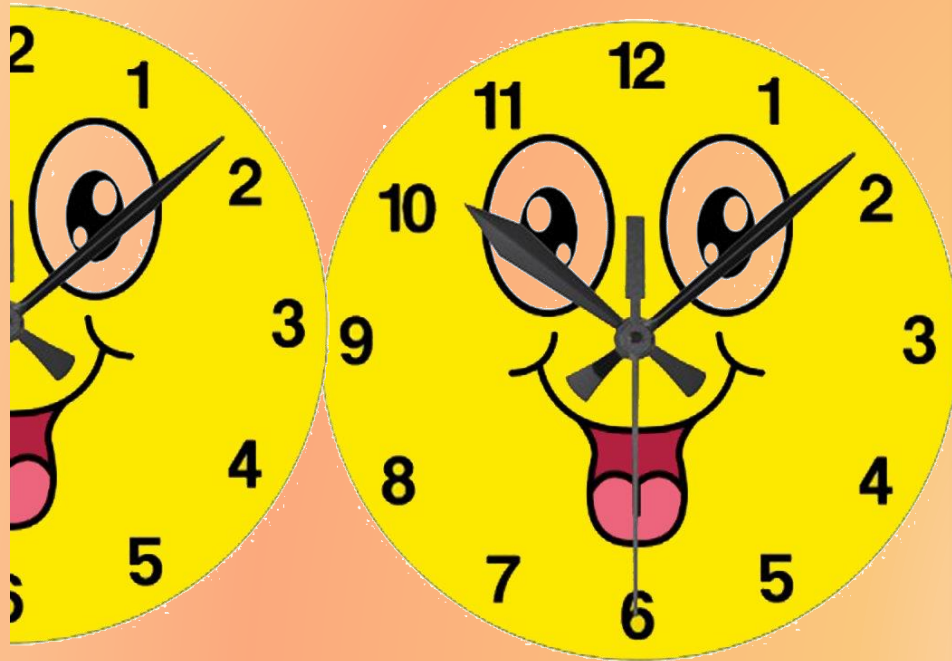
2,612

8,784



Continuous improvement

From Full Day K for *some*
in *some* schools
to
all day K for *all*
in *all* schools



Continuous improvement

2015 Smarter Balanced results
Everett compared to the state

	ELA	Math	Science
Grade			
3	+ 8.6	+ 5.8	
4	+ 9.7	+ 7.8	
5	+12.5	+ 8.0	
6	+14.2	+ 6.4	
7	+15.5	+ 9.6	
8	+15.3	+10.2	+12.9
10	+ 0.5		+ 5.1
11	+18.0	+18.0	
12	+11.3	+ 8.6	

Once again,
Everett's students
outperform
the rest of the
state!



Continuous improvement

Using *State of the School Review* feedback

Strengths

- Improved graduation rates
- One of two districts in county exceeding statewide SBA math and literacy success in all grades
- Increased number of students participating and achieving in Advanced Placement courses
- English language acquisition
- Increased college bound scholarships completion

Challenges

- Narrowing gender achievement gap (boys)
- Providing specific subgroups additional support (Hispanics, special education, Native Americans)
- Closing SES achievement gap
- Creating district-wide culture of readers
- Implementing rigorous standards-based assessments mirroring SBA
- Improving school attendance



Continuous improvement

Schools earn achievement awards

View Ridge Elementary
Mill Creek Elementary
Cedar Wood Elementary
Eisenhower Middle School
Henry M. Jackson High School
Garfield Elementary

Congratulations to
the district's 2014
& 2015

*Washington State
Schools of
Achievement.*

Shhh! More to be announced next week

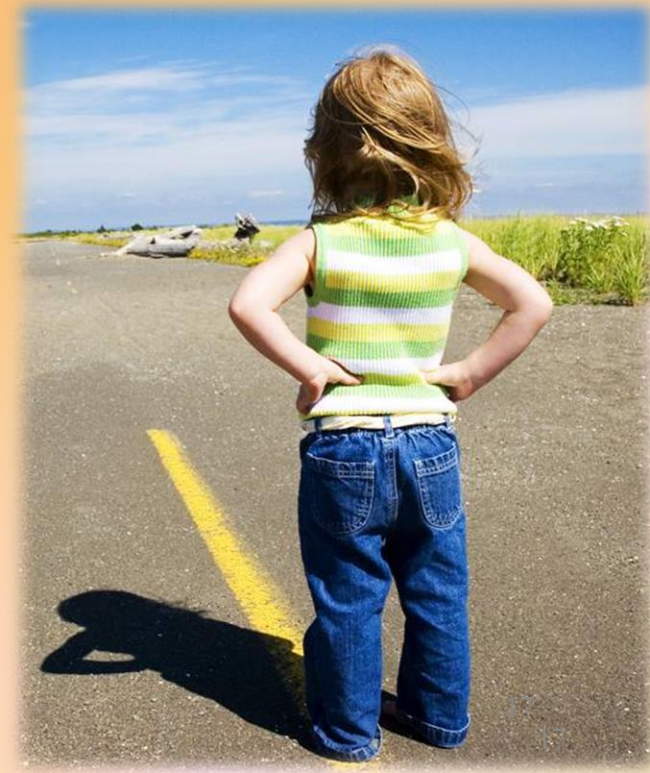
Since 2005, district schools
have been honored with these
and other state and national
awards 84 times!



On the horizon

Some highlights for 2016 and beyond

- **AP Capstone** at each high school in 2016
- **Second annual Summer Reading Challenge** in 2016
- **New Executive Director of STEM, Partnerships and Legislative Affairs**
- **Everett High and Evergreen Middle are *Microsoft Showcase Schools***
- **Naviance** available to all parents & students, grade 6 through 12



On the horizon

For 2016 and beyond

1. Replacement Safety, Building, and Instructional Technology Improvements Levy
2. Capital Bond

Who has been involved?

Why?

What's on the ballot?

What will it cost?



On the horizon

Bond & Capital Levy

Who has been working on this?

For how long?

Since spring 2014

- 14 public board meetings, study sessions, *Fishbowls*
- Board tours of Microsoft and Microsoft Demonstration School
- 2 *Thoughtexchange* online community perception engagements
- Capital Facilities Advisory Council
- Facilities Advisory Council
- Technology Advisory Council
- Presidents' Advisory Council
- PTSA Council
- Snohomish Economic Alliance



On the horizon

Bond & Capital Levy, April 26, 2016



If approved on
April 2016,
bond funds would be
available as projects
launch

Capital Levy funds would
be available over 6 years,
beginning spring 2017

On the horizon

Bond & Capital Levy

What might this cost?



Purple = Past & present tax rates for district

2014 bond failure and EXPIRING capital levy brought rate to low of \$5.18.

Green = Projected tax rates if both bond and levy are approved.

New rate would begin in 2017 and remain stable through 2020. The new projected rate is LOWER than what residents paid in 2013 and 2014.

Thank you!

We are growing, changing & continuously improving because of your support

Suggestions? Questions?

We are Everett
Public Schools.
Thanks for helping
us prepare for our
futures.

